



# The Professional Arts Building 205 North Broad Street, Philadelphia PA

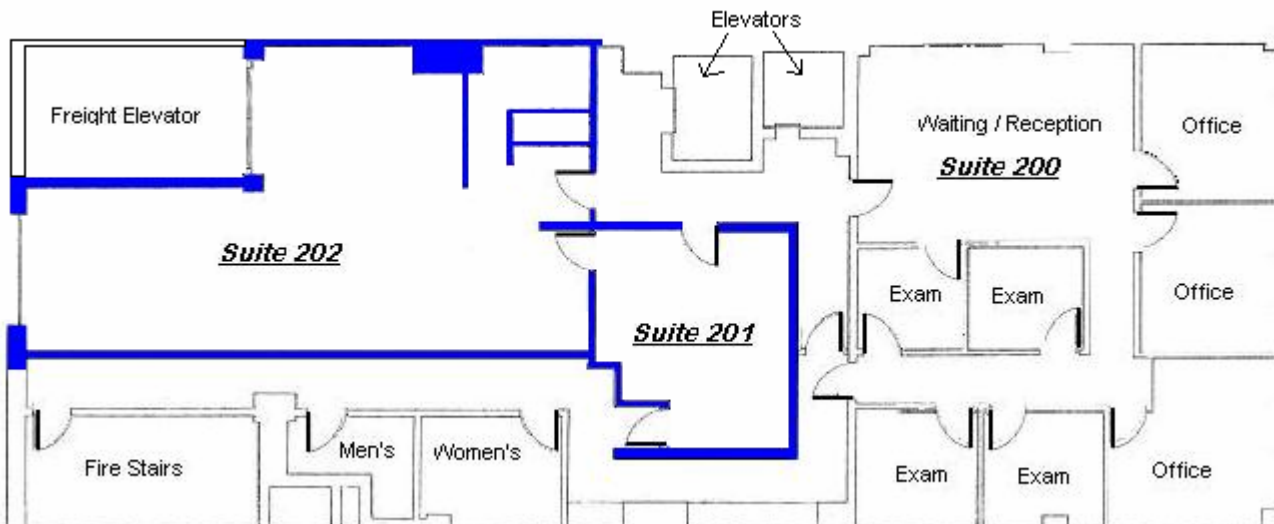
## Medical Offices

**Description:** A six story, mezzanine and basement steel reinforced concrete with glass front façade. Conveniently located on North Broad Street, in Center City Philadelphia. Built in 1915, the exterior is all masonry. The property, over recent year, has been transformed from a former underutilized loft building into a highly functional and modern multi-tenant medical office building completely air conditioned and freight/passenger elevator served. Adjacent to Hahnemann University and Hospital. Close proximities to City Hall, the Convention Center, and Market Street East.

Suite 200 is occupied by Whitman Internal Medicine and Burton Weiss MD.



GoStar



**AVAILABLE:**  
*Suite 201/202*  
*Approximately*  
*1650 square feet*

Contact: Anthony J. Sembello  
E-Mail: ajs@tbrg.net  
Cell – 267-577-5989